



DOOR STYLES + FINISHES

*Dynasty*  
by Omega®

Cabinetry • Countertops • Installation

 **Diamond**  
Kitchen & Bath, Inc.

Licensed • Bonded • Insured

4010 N.W. Grand Ave. Phoenix, Arizona 85019  
(602) 246-1518 • Fax 589-0898

522 N. Country Club • Mesa, Arizona 85201  
(480) 464-5565 • Fax (480) 464-5638

Cherry & Stainless Steel/Monterey/Mandarin



The warmth of cherry meets the coolness of stainless steel in this kitchen that makes the most of both. Double islands accommodate two cooks and welcome family and friends.

# DYNASTY VINTAGE TOUCH

Give your cabinetry the rich patina of an antique with Vintage Touch, available with all stains and opaque colors. Especially appealing with the new Arctic, Coffee or Pewter glazes. All of these special effects are applied by hand for a randomness like the natural wearing of wood through the years.

## SAND OVER/ SAND THROUGH/EDGING

This combination of techniques is accomplished in three steps, before staining, after staining and with a gray-toned edging, to give you all the softness of natural wear.

## WORM HOLES

Elliptical holes applied by hand in random clusters. Extremely realistic.

## SPECKLING

Spatters of transparent black speckles capture the authentic look of age.

## DISTRESSING

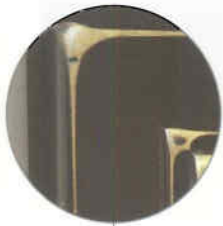
Random dents and rasped edges vary in size and shape just as they do in well-worn antiques.

## HAND-APPLIED GLAZE

Our optional hand-applied glazes show the individual hand of the craftsman – a very appropriate special effect with Vintage Touch. Coffee, Java, Latte, Caramel, Pewter and Arctic are crevice-only glazes that allow your original stain choice to remain unchanged.

## HIGHLAND IN MAPLE

left to right: Heirloom Black, Alma Caramel Vintage Touch, Mocha Coffee Vintage Touch



RAISED PANEL MITERED



Artesia

Denison

Destin

Melbourne

Province

Sanibel

Wakefield

RAISED PANEL



Brookside Arch

Brookside Cathedral

Brookside Raised

Brookside Square

Darville

Guthrie

Highland



Lynnville Decorative

**NEW!** Kentwood

Portage

Wellington Arch

Wellington Cathedral

Wellington Square

All styles are Designer Overlay except Wellington Square, Wellington Cathedral, Wellington Arch and Planked, which are standard overlay, and Villa, which is a contemporary overlay.

RAISED PANEL MDF



Carlisle Arch

Carlisle Raised

Carlisle Square

SMOOTH PANEL



Planked

Vail

Villa

FLAT PANEL



Clayton

Clayton Beaded

Madrid

Marion

Marion Slab

Morris

Plainfield

FLAT PANEL



Plainfield Slab

Plymouth

FLAT PANEL MITERED



Bancroft

Hanover

Morocco

**NEW!** Richfield

DYNASTY II DOOR STYLES



Anson

Barrington

Brentwood

Delray

**NEW!** Gala

Heritage

Manor



Marco

**NEW!** Metro

Provincial

Puritan

Salona

Williamsburg

MAPLE

CHERRY

ALDER



Antique White



Aster



Natural



Mocha



Merlot



Natural



Mocha



Coral Frost



Cocoa



Honey



Mandarin



Truffle



Honey



Mandarin



Natural



Mocha



Wheat



Nutmeg



Wheat



Nutmeg



Honey



Mandarin



Autumn



Cinnamon



Autumn



Cinnamon



Wheat



Ginger



Butternut



Sage



Butternut



Sage



Autumn



Aster



Sable



Aster



Sable



Butternut



Cocoa



Burgundy



Cocoa



Burgundy



Ginger



Chestnut



Ginger



Truffle

Printing technology does not allow for absolutely accurate reproduction of wood, stain or opaque colors. See your dealer's displays and samples for actual colors.

PECAN

OAK

RED BIRCH



Antique White



Aster



Sage



Antique White



Cocoa



Burgundy



Natural



Coral Frost



Cocoa



Burgundy



Coral Frost



Ginger



Chestnut



Autumn



Natural



Ginger



Chestnut



Natural



Mocha



Truffle



Honey



Mocha



Honey



Mandarin

ACCENT  
STAINS

SPECIAL  
COLLECTION  
FINISHES



Wheat



Mandarin



Wheat



Nutmeg



Denim



Blackberry



Autumn



Nutmeg



Autumn



Cinnamon



Juniper



Heirloom Black



Butternut



Cinnamon



Butternut



Sage



Barn Red

Accents available  
in maple, oak  
and pecan.  
Shown on oak.



Blackberry (available  
on cherry, oak or  
rustic oak) has a deep  
red undertone  
exposed by sand-  
through and light  
distressing. Heirloom  
Black, available on  
maple or oak, includes  
Vintage Touch.



Aster



Sable

Rustic Alder, Rustic Oak and Rustic Pecan are available in all alder, oak and pecan stains and glazes. See your dealer for samples.

# OPAQUES



# GLAZES



**ARCTIC**  
SELECT STAINS  
AND OPAQUES

**PEWTER**  
SELECT STAINS  
AND ALL  
OPAQUES

**COFFEE**  
SELECT STAINS  
AND ALL  
OPAQUES

**PORCELAIN**  
SELECT STAINS

**BRONZE**  
SELECT STAINS

**CARAMEL**  
ALL OPAQUES

**PISTACHIO  
GLAZE**  
SELECT OPAQUES



WHAT A DIFFERENCE A GLAZE MAKES. Each of these doors began with a standard Mandarin stain on Cherry. They are shown unglazed, glazed in light gray Pewter and glazed in dark brown Coffee. These, as well as our refreshingly icy Arctic glaze and delicious, mid-toned Caramel, are crevice-only glazes that leave the underlying stain unaffected. We also offer two wiping glazes, Porcelain and Bronze, which tone the overall color while adding highlights.

**MELBOURNE IN CHERRY left to right:** Mandarin, Mandarin Pewter, Mandarin Coffee



**NEW! STAINLESS STEEL DOORS.** Explore this new option for adding excitement to your kitchen. Available as a smooth panel; a flat, recessed panel and a glass-ready frame, these doors are the same heavy gauge stainless steel used for the front of your appliances. The 3" frame width matches our Monterey and Madrid door styles perfectly and coordinates with many other styles.

**Left to right:** smooth Stainless Steel, flat panel Stainless Steel